

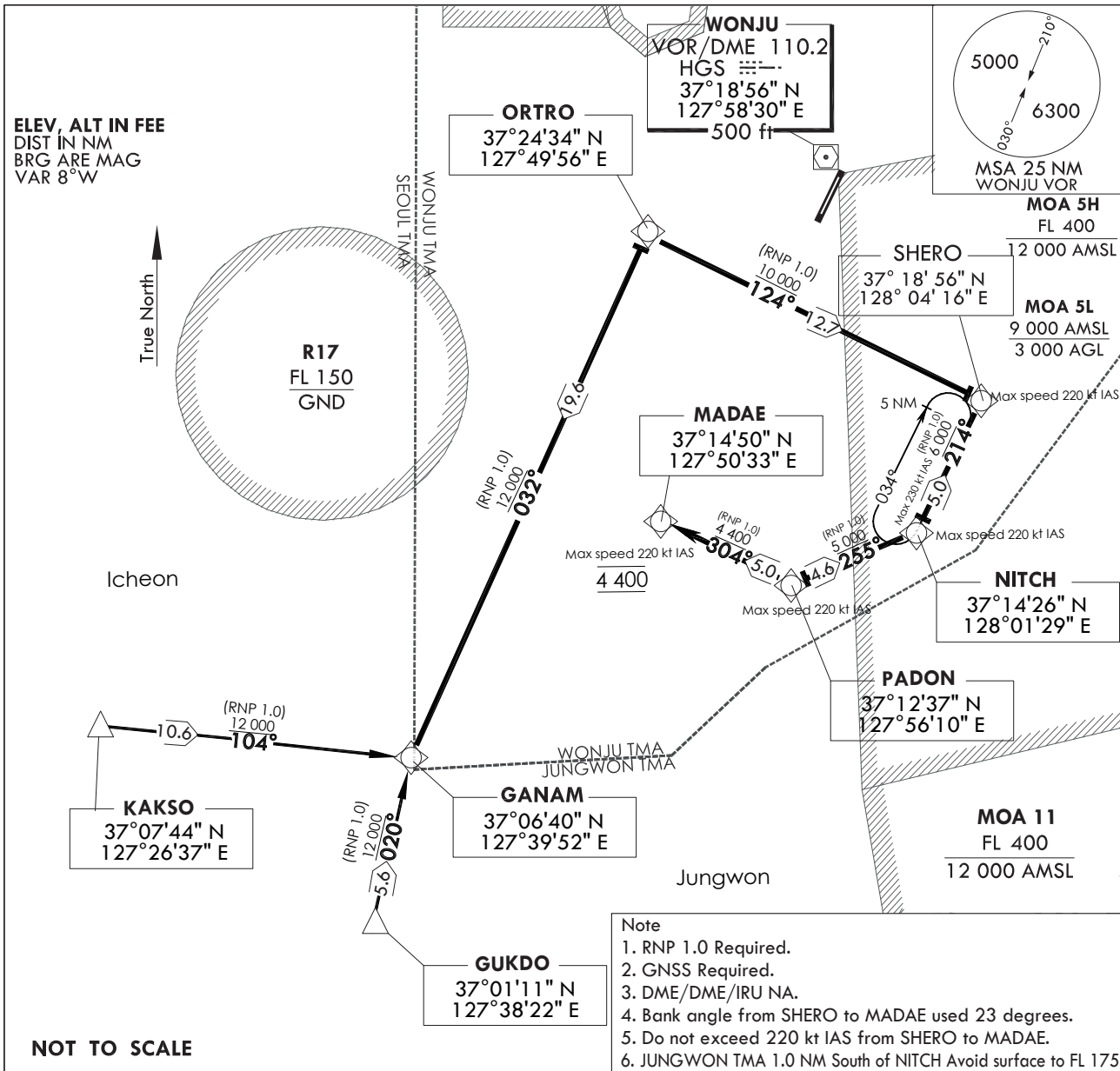
**STANDARD ARRIVAL CHART
INSTRUMENT(STAR)**

TRANSITION ALT 14 000
TRANSITION LVL FL 140

WONJU APP	130.2	234.4	255.0
WONJU TWR	126.2	118.325	236.6
		265.5	

**WONJU/wonju (RKNW)
RWY 03
RNAV(GNSS) GANAM 1**

Note : Arrival under U.S TERPS.



NOT TO SCALE

ARRIVAL ROUTE DESCRIPTION

KAKSO TRANSITION

From KAKSO on track 104° to cross GANAM at or above 12 000 ft thence....

GUKDO TRANSITION

From GUKDO on track 020° to cross GANAM at or above 12 000 ft thence....

....From GANAM on track 032° to cross ORTRO at or above 12 000 ft, then on track 124° to cross SHERO at or above 10 000 ft, then on track 214° to cross NITCH at or above 6 000 ft, then on track 255° to cross PADON at or above 5 000 ft, then on track 304° to cross MADAE at 4 400 ft. Expect RNAV approach.

Change : Information of APP frequency.

WONJU/wonju (RKNW)
 RWY 03
 RNAV(GNSS) GANAM 1

AERONAUTICAL DATA TABULATION

Standard Instrument Departure Procedure Coding Tables

RNAV(GNSS) GANAM 1

Serial Number	Path Descriptor	Waypoint Identifier	Fly -Over	Course/Track ° M(° T)	Distance (NM)	Turn Direction	Altitude (ft)	Speed (kt)	Coordinates	VPA /TCH	Navigation specification	Remarks
001	TF	ORTRO	-	032(024.1)	19.6	-	+12 000	-	372434.20 N 1274955.77 E	-	RNPAPCH	-
002	TF	SHERO	-	124(116.2)	12.7	-	+10 000	-220	371855.50 N 1280415.64 E	-	RNPAPCH	
003	TF	NITCH	-	214(206.3)	5.0	-	+6 000	-220	371426.31 N 1280128.98 E	-	RNPAPCH	
004	TF	PADON	-	255(246.9)	4.6	-	+5 000	-220	371237.42 N 1275609.75 E	-	RNPAPCH	IAF
005	TF	MADAE	-	304(296.3)	5.0	-	4 400	-220	371450.45 N 1275032.84 E	-	RNPAPCH	IF

KAKSO Transition

Serial Number	Path Descriptor	Waypoint Identifier	Fly -Over	Course/Track ° M(° T)	Distance (NM)	Turn Direction	Altitude (ft)	Speed (kt)	Coordinates	VPA /TCH	Navigation specification	Remarks
001	TF	KAKSO	-	-	-	-	-	-	370744.60 N 1272637.40 E	-	RNPAPCH	-
002	TF	GANAM	-	104(095.7)	10.6	-	+12 000	-	370640.05 N 1273952.09 E	-	RNPAPCH	-

GUKDO Transition

Serial Number	Path Descriptor	Waypoint Identifier	Fly -Over	Course/Track ° M(° T)	Distance (NM)	Turn Direction	Altitude (ft)	Speed (kt)	Coordinates	VPA /TCH	Navigation specification	Remarks
001	TF	GUKDO	-	-	-	-	-	-	370110.93 N 1273822.86 E	-	RNPAPCH	-
002	TF	GANAM	-	020°(012.3°)	5.6	-	+12 000	-	370640.05 N 1273952.09 E	-	RNPAPCH	-

Holding Data

Serial Number	Path Descriptor	Waypoint Identifier	Fly -Over	Course/Track ° M(° T)	Distance (NM)	Turn Direction	Altitude (ft)	Speed (kt)	Coordinates	Remarks
001	TF	NITCH	-	214(206.3)	5.0	-	-	-230	371426.31 N 1280128.98 E	Holding at NITCH NE Right Turn 214° Inbound 5 NM Leg.

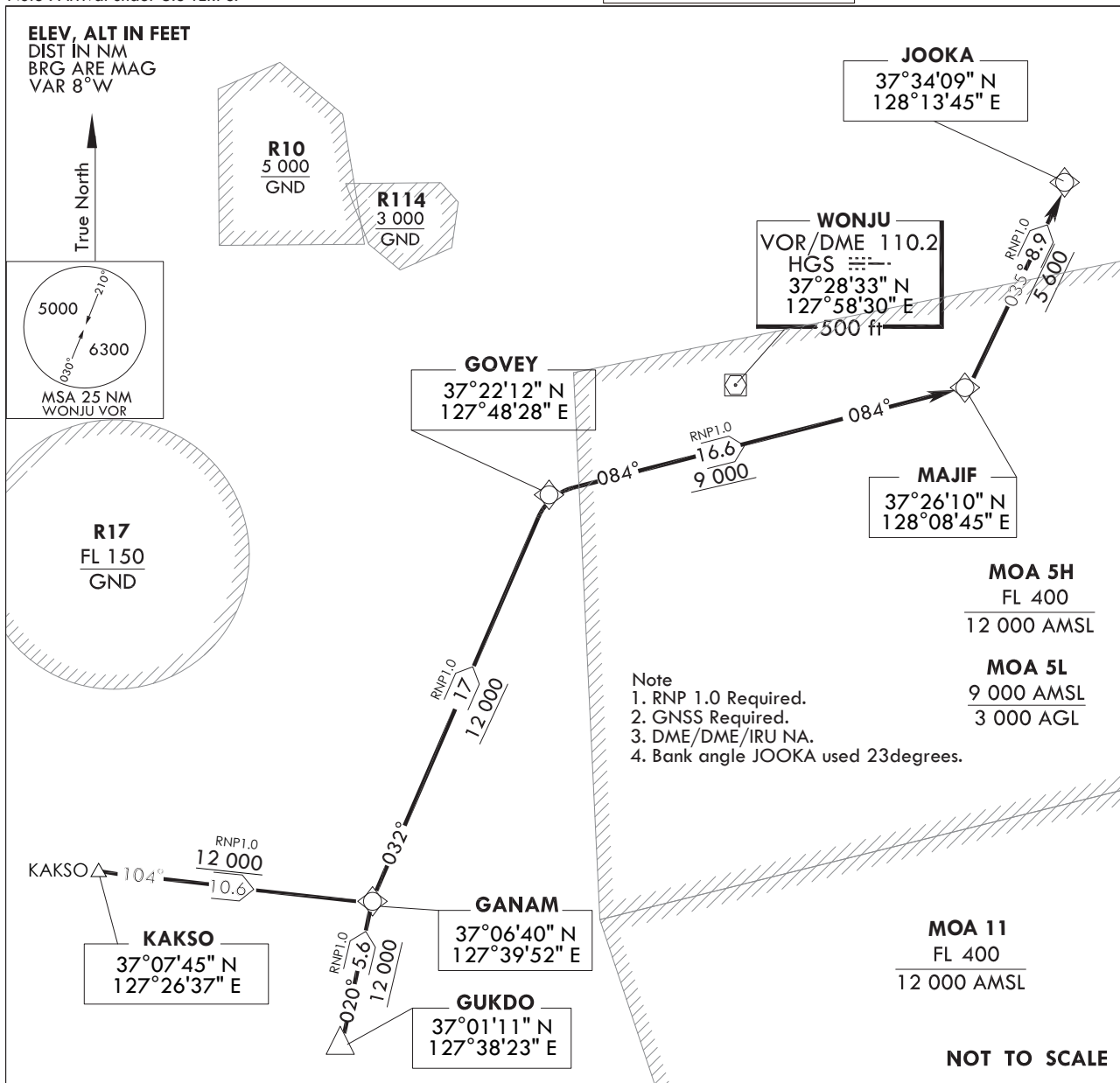
**STANDARD ARRIVAL CHART
INSTRUMENT(STAR)**

TRANSITION ALT 14 000
TRANSITION LVL FL 140

WONJU APP 130.2
234.4 255.0
WONJU TWR 126.2 118.325
236.6 265.5

WONJU/wonju (RKNW)
RWY 21I
RNAV(GNSS) GANAM 2

Note : Arrival under U.S TERPS.



ARRIVAL ROUTE DESCRIPTION

KAKSO TRANSITION

From KAKSO on track 104° to cross GANAM at or above 12 000 ft thence....

GUKDO TRANSITION

From GUKDO on track 020° to cross GANAM at or above 12 000 ft thence....

....From GANAM on track 032° to cross GOVEY at or above 12 000 ft, then on track 084° to cross MAJIF at or above 9 000 ft, then on track 035° to cross JOOKA at 5 600 ft. Expect RNAV approach.

Change : Information of procedure name(RWY 03 → RWY 21).

WONJU/wonju (RKNW)
RWY 03
RNAV(GNSS) GANAM 2

AERONAUTICAL DATA TABULATION

Standard Instrument Departure Procedure Coding Tables

RNAV(GNSS) GANAM 2

Serial Number	Path Descriptor	Waypoint Identifier	Fly -Over	Course/Track ° M(° T)	Distance (NM)	Turn Direction	Altitude (ft)	Speed (kt)	Coordinates	VPA /TCH	Navigation specification	Remarks
001	TF	GOVEY	-	032(023.8)	17.0	-	+12 000	-	372212.18 N 1274828.24 E	-	RNPAPCH	-
002	TF	MAJIF	-	084(076.1)	16.6	-	+9 000	-	372609.80 N 1280845.31 E	-	RNPAPCH	-
003	TF	JOOKA	-	035(026.5)	8.9	-	5 600	-	373408.84 N 1281345.27 E	-	RNPAPCH	-

KAKSO Transition

Serial Number	Path Descriptor	Waypoint Identifier	Fly -Over	Course/Track ° M(° T)	Distance (NM)	Turn Direction	Altitude (ft)	Speed (kt)	Coordinates	VPA /TCH	Navigation specification	Remarks
001	TF	KAKSO	-	-	-	-	-	-	370744.60 N 1272637.40 E	-	RNPAPCH	-
002	TF	GANAM	-	104(095.7)	10.6	-	+12 000	-	370640.05 N 1273952.09 E	-	RNPAPCH	-

GUKDO Transition

Serial Number	Path Descriptor	Waypoint Identifier	Fly -Over	Course/Track ° M(° T)	Distance (NM)	Turn Direction	Altitude (ft)	Speed (kt)	Coordinates	VPA /TCH	Navigation specification	Remarks
001	TF	GUKDO	-	-	-	-	-	-	370110.93 N 1273822.86 E	-	RNPAPCH	-
002	TF	GANAM	-	020°(012.3°)	5.6	-	+12 000	-	370640.05 N 1273952.09 E	-	RNPAPCH	-